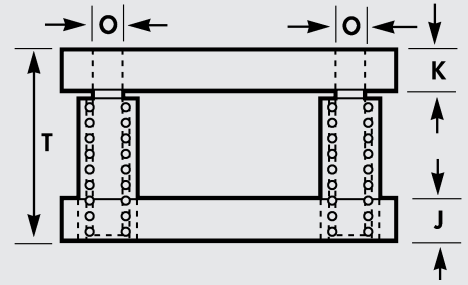
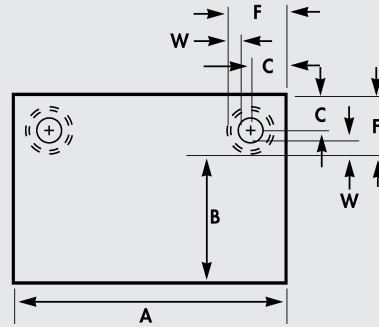
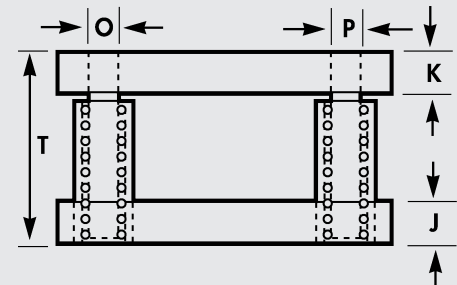
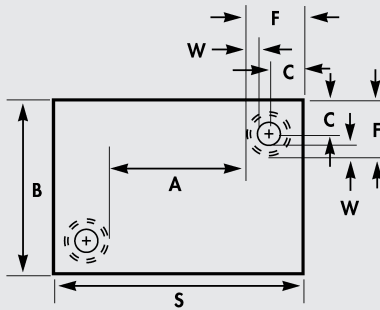
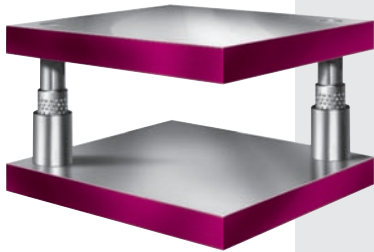


# Custom, Two Post Ball Bearing Die Sets

Back Post - Type 2BB

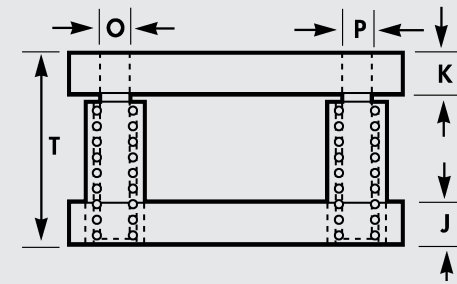
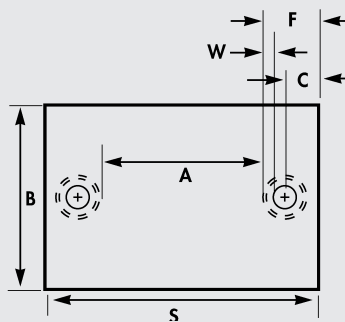


Diagonal Post - Type 2BD



Center of die space is in the center of the die plates.

Center Post - Type 2BC



Center of die space is in the center of the die plates.

When ordering custom ball bearing die sets, specify:

1. Type 2BB, 2BD, or 2BC.
2. Dimensions A, B, J, and K.
3. Ball bearing die sets will be furnished with straight steel sleeve bushings or demountable ball bearing bushings.
4. Dimension "T" is minimum shut height.
5. Post diameter "O" & "P". (O and P should be different for 2BD and 2BC.)
6. Custom die sets may not be returned for credit.
7. Quantity needed.

Two Post Die Sets Dimensions furnished when customer specifies only A and B dimensions.

Die Space L to R A	Post Diameter O	Post Diameter P	D.H. Thickness J	P.H. Thickness K	F for Sleeve Bushing	F for Demountable Bushing	C For O Post	C for P Post (Sleeve Bushing)	C for P Post (Demountable Bushing)	S
6" to 8"	1	--	1 1/4	1 1/4	2 11/16	2 7/8	1 3/4	--	--	--
9" to 12"	1 1/4	1	1 1/2	1 1/2	2 15/16	3 1/16	1 7/8	2	2	A + 2F
13" to 16"	1 1/2	1 1/4	1 1/2	1 1/2	3 3/8	3 9/16	2 1/8	2 1/4	2 3/8	A + 2F
17" to 22"	1 3/4	1 1/2	1 3/4	1 3/4	3 5/8	3 13/16	2 1/4	2 3/8	2 3/8	A + 2F
23" to 28"	2	1 3/4	2	2	4 1/8	4 5/16	2 1/2	2 3/4	2 3/4	A + 2F
29" to 40"	2	1 3/4	2 1/2	2 1/2	4 1/8	4 5/16	2 1/2	2 3/4	2 3/4	A + 2F
41" to 65"	2 1/2	2	3	3	4 3/4	5	2 7/8	3 1/8	3 1/8	A + 2F