

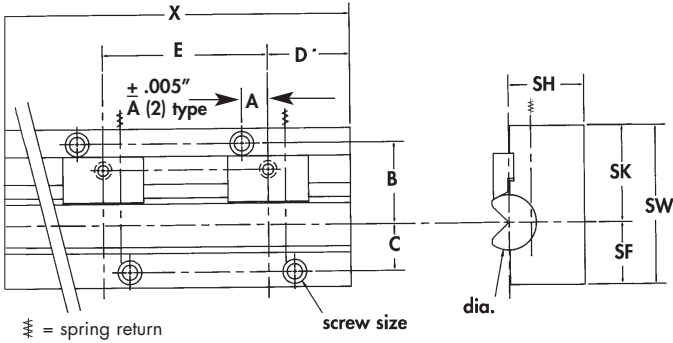


READY High Production Benders - Inch: Custom Lengths

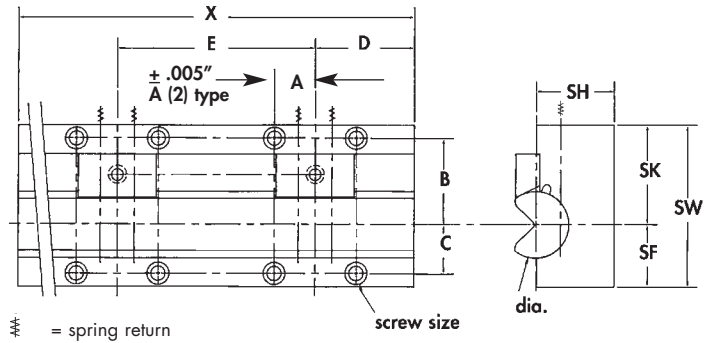
- READY'S CNC grinding technology delivers custom lengths up to 36" long at attractive prices.
- Longer lengths achieved by butting two or more units end-to-end, .010" gap.

- Now available up to 36" long.
- Specify your desired length (X) and READY will deliver.

REC 62, 100 and 150 Repeating Hole Patterns
(for 5/8", 1", and 1 1/2" Diameter Rockers)



REC 200, 250 and 300 Repeating Hole Patterns
(for 2", 2 1/2", and 3" Diameter Rockers)



Minimum/Maximum Lengths:

1. Charts and drawings showing hole locations start at nominal lengths. Custom lengths start very short, at catalog Gib Length (GL) dimensions.
2. Mounting hole patterns for shorter, custom lengths are available upon request by application.

- REC 62** Minimum 1.125" (GL) Maximum 24"
- REC 100** Minimum 1.500" (GL) Maximum 24"
- REC 150** Minimum 2.000" (GL) Maximum 36"
- REC 200** Minimum 2.500" (GL) Maximum 36"
- REC 250** Minimum 3.000" (GL) Maximum 36"
- REC 300** Minimum 3.500" (GL) Maximum 36"

3. Standard in stock lengths of READY High Production Benders are cataloged on page 7. These ship fast and cost less. The READY Bender® - Inch, pages 4 and 5, is available in custom lengths and can further reduce your tooling budget.

NOTE:

- Counterbored holes standard, tapped available as specials.
- READY High Production Bender - metric, pages 16 to 18, is the same product only with metric holes.

Model and Rocker Diameter	"X" Length	A	B	C	D	E	SHCS size
REC 62 5/8" dia.	lengths 6 - 12"	.354"	1.181"	.551"	"X" ÷ 8	"X" ÷ 4	#10
REC 100 1" dia.		.472"	1.476"	.846"	"X" ÷ 8	"X" ÷ 4	1/4
REC 150 1 1/2" dia.		.669"	1.969"	1.181"	"X" ÷ 6	"X" ÷ 3	5/16
REC 62 5/8" dia.	lengths 12.5 - 24"	.354"	1.181"	.551"	"X" ÷ 12	"X" ÷ 6	#10
REC 100 1" dia.		.472"	1.476"	.846"	"X" ÷ 12	"X" ÷ 6	1/4
REC 150 1 1/2" dia.		.669"	1.969"	1.181"	"X" ÷ 10	"X" ÷ 5	5/16
REC 62 5/8" dia.	lengths 24.5 - 36"	.354"	1.181"	.551"	"X" ÷ 16	"X" ÷ 8	#10
REC 100 1" dia.		.472"	1.476"	.846"	"X" ÷ 16	"X" ÷ 8	1/4
REC 150 1 1/2" dia.		.669"	1.969"	1.181"	"X" ÷ 14	"X" ÷ 7	5/16
REC 200 2" dia.	lengths 8 - 12"	1.240"	2.598"	1.476"			3/8
REC 250 2 1/2" dia.		1.378"	3.110"	1.732"	"X" ÷ 4	"X" ÷ 2	1/2
REC 300 3" dia.		1.575"	3.642"	2.244"			1/2
REC 200 2" dia.	lengths 12.5 - 24"	1.240"	2.598"	1.476"			3/8
REC 250 2 1/2" dia.		1.378"	3.110"	1.732"	"X" ÷ 6	"X" ÷ 3	1/2
REC 300 3" dia.		1.575"	3.642"	2.244"			1/2
REC 200 2" dia.	lengths 24.5 - 36"	1.240"	2.598"	1.476"			3/8
REC 250 2 1/2" dia.		1.378"	3.110"	1.732"	"X" ÷ 10	"X" ÷ 5	1/2
REC 300 3" dia.		1.575"	3.642"	2.244"			1/2

Compact READY Benders®

• Designed to fit "tight" die spaces, small footprint.

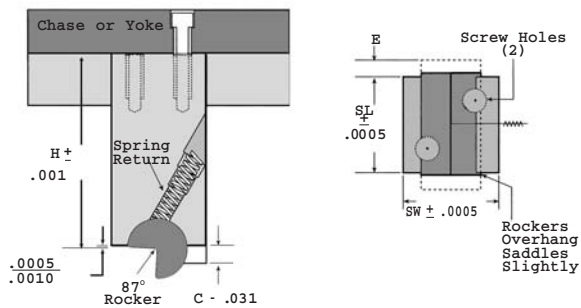
- Recommended for high production applications.
- Hardened tool steel, all surfaces precision ground. Rockers Rc 56-62. Saddles Rc 48-52. Chase or Yoke mounting by die maker.
- Standards in stock for fast delivery. Special compact benders can be made to your height and length requirements upon request.

The original compact benders called CBT and CLT are not discontinued. See earlier catalog or request a fax sheet to detail the parameters.



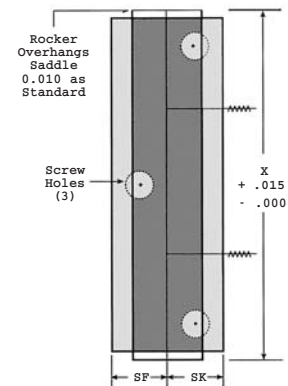
Selection and Ordering:

1. Locate the material thickness you are forming on the top row. Read down the column for your data.
2. Longer lengths are achieved by butting units end-to-end.
3. We make special compact benders. Fax the worksheet on the back cover with prints.



Regular Benders

Note: extended rockers (E) are special



For All HiPRO Compacts SF and SK Equal 1/2 SW
 *** = Spring Return

Long Benders

Ends of saddles are not ground

PART MATERIAL		PART MATERIAL THICKNESS RANGES (inches)			
Mild Steel		.010" - .042"	.043" - .075"	.076" - .120"	.121" - .165"
REGULAR BENDERS		STANDARD			
Catalog Callout (stocked)		HCBT 62	HCBT 100	HCBT 150	HCBT 200
		Bender Dimensions			
Rocker Diameter	D	.625	1.000	1.500	2.000
Regular Benders	SW x SL	1.000" x 1.000"	1.500" x 1.500"	2.000" x 2.000"	3.000" x 3.000"
Height	H	2.000"	2.000"	2.750"	3.000"
Rocker Extension (special)	E	1/4"	1/4"	3/8"	1/2"
LONG BENDERS		SPECIAL ORDER			
Catalog Callout (special)		HCLT 62	HCLT 100	HCLT 150	HCLT 200
Long Benders, width	SW	1.000"	1.500"	2.000"	3.000"
Length (specify)	X	1.500" - 6.000"	2.000" - 8.000"	2.750" - 8.000"	3.000" - 8.000"
Height (specify)	H	2.000" - 3.000"	2.000" - 3.000"	2.750" - 3.750"	3.000" - 4.000"
Rocker Dimensions		Designer Dimensions (87° Rocker)			
	B	.212"	.339"	.508"	.678"
	C	.195"	.312"	.468"	.624"
	J	.246"	.393"	.590"	.786"
SHCS screws		1/4 - 20	5/16 - 18	5/16 - 18	1/2 - 13

Take Advantage of the Latest Bender Technology

READY encourages upgrading to the improved designs detailed in this catalog for best performance, delivery, and lowest tooling costs. We now offer longer one piece full hard benders in lengths up to 36" long.

We make specials too ... use the worksheet on back cover and fax prints.